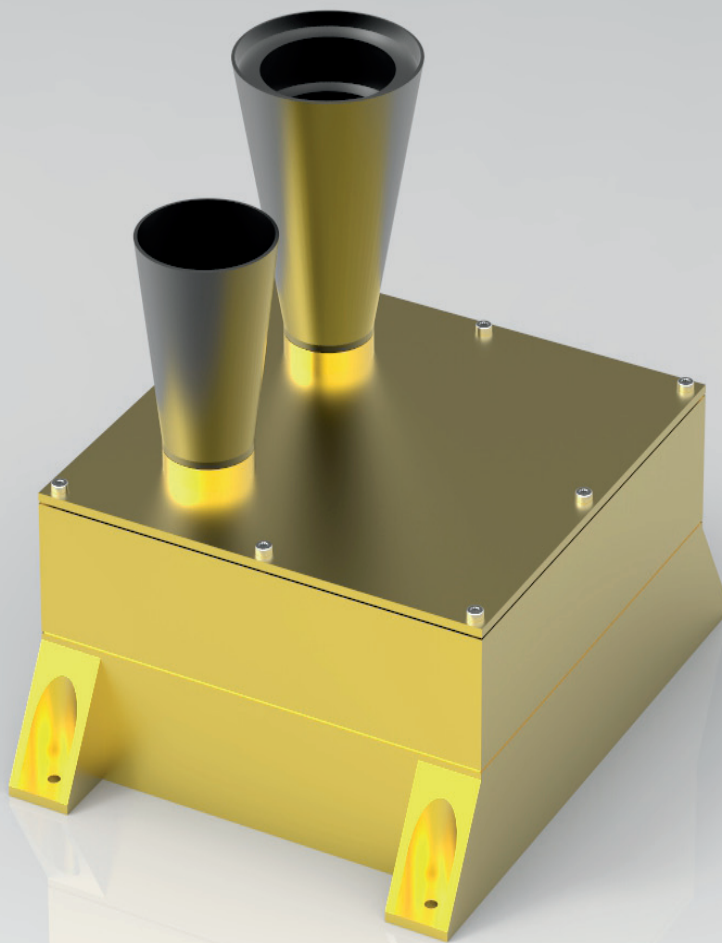


Laser Range Finder

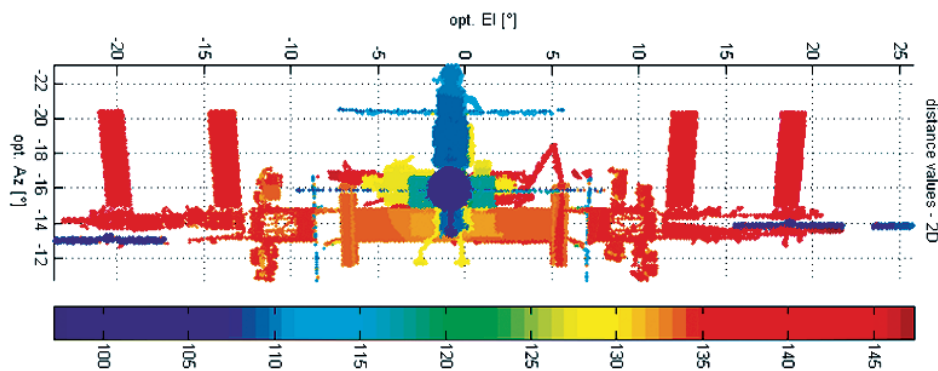
Jena-Optronik's compact non-scanning Laser-Range-Finder for cooperative and non-cooperative targets.



Laser Range Finder performance [as per March 2017]

Size & Mass		
Dimension	200mm x 160mm x 165mm	including baffle
Mass	approx. 3 kg	including baffle
Laser		
Wavelength	910nm (eye safe) or 1550nm (eye safe)	
Operating Range		
Range min.	<1 m	
Range max.	>3000 m	cooperative targets ¹ ; depending on Field of view
	>1000 m	non-cooperative targets; depending on Field of view
Field of View	<16°	customer-specific
Performance		
Accuracy	<0.5m	cooperative targets ¹ ; depending on range
Sampling Rate	> 5 Hz	
Power Consumption		
Average	18 W	
Maximum	25 W	
Temperature Range		
Operational	-25°C ... +60°C	
Non-operational	-40°C ... +70°C	
Electrical Interface		
Data Interface	RS422 or SpaceWire	
Output Data		
	Relative distance to target	

¹ assuming on retro-reflector (=target) within the field of view



Range image of the ISS (International Space Station) from LIRIS-2 experiment on ATV-5.

The range image was produced using the Laser Range Finder technology.